

## PORT OPERATIONS

### **Notice to Mariners 46/16**

#### **Granville Dock Marina Depths**

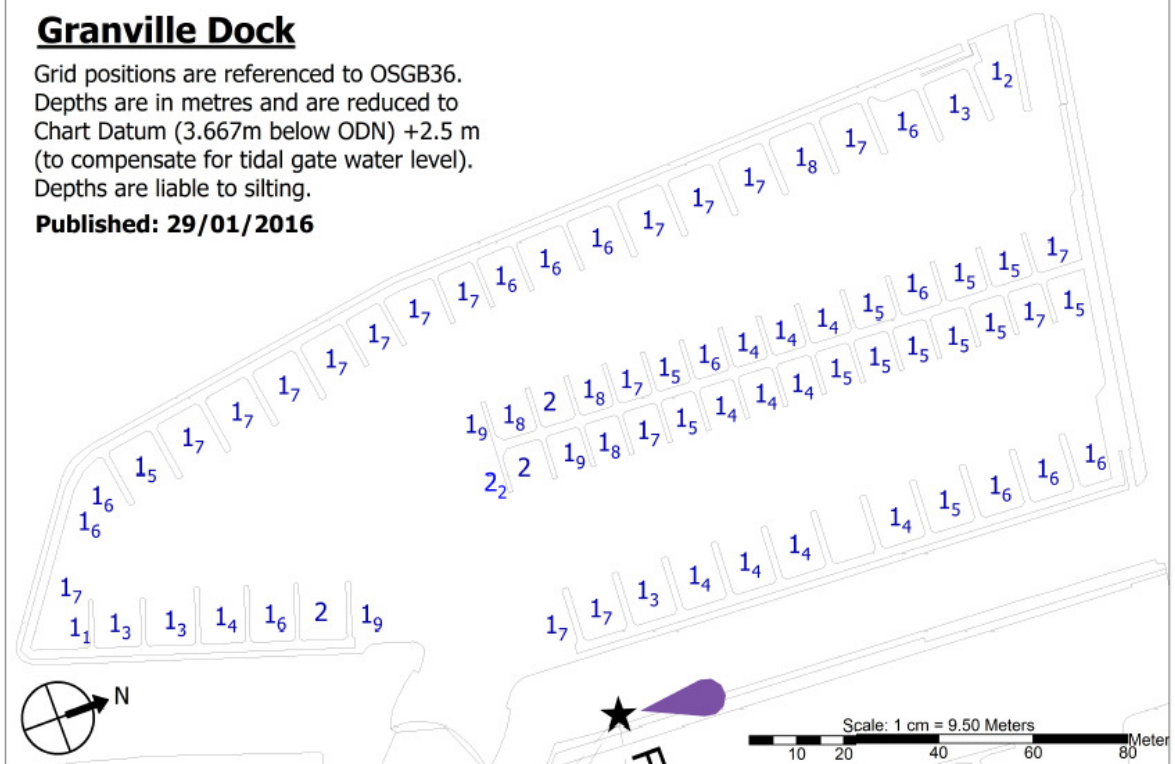
Results from a recent hydrographic survey have indicated that depths in the Granville Dock have reduced due to silting. Mariners are therefore advised to proceed with caution when departing the Granville Dock if they have a draft of 1.5m or greater. The dock gates are normally opened when the height of tide has reached 2.5m, equating to a depth of water in the dock of 1.5m on current soundings. Vessels with a draft in excess of 1.5m, should wait until the tide rises sufficiently as appropriate to their draft before departing. The Marina Berthing Master can advise on the actual height of tide and is contactable on VHF Channel 80.

Similarly when entering the Granville Dock, vessels with a draft in excess of 1.5m should arrive in sufficient time to have enough height of tide as appropriate to their draft. The dock gates are normally closed on the falling tide when the height of tide is 2.55m.

## **Granville Dock**

Grid positions are referenced to OSGB36.  
Depths are in metres and are reduced to  
Chart Datum (3.667m below ODN) +2.5 m  
(to compensate for tidal gate water level).  
Depths are liable to silting.

**Published: 29/01/2016**



Paul Brown  
Harbour Master

16<sup>th</sup> September 2016

### **Notices Remaining In Force:**

- 47/14 – ED9 Berth Missing Side Fender
- 07/15 – ED3 Extension Side Fender Temp Removal (amended)
- 54/15 – Coralwater Tidal Restriction
- 70/15 – Pier Alpha Nav Lt reinstated. HIL and Fog Signal Unserviceable (updated)
- 02/16 – Leisure Zone Special Mark Buoy (amended)
- 15/16 – Buoys marking swimming area
- 17/16 – Buoys marking DWDR works exclusion zone
- 40/16 – Decommissioned Mooring Equipment
- 44/16 – Diving Operations Eastern And Western Docks
- 45/16 – ED5 and ED6 Survey Works
- 46/16 – Granville Dock Marina Depths