

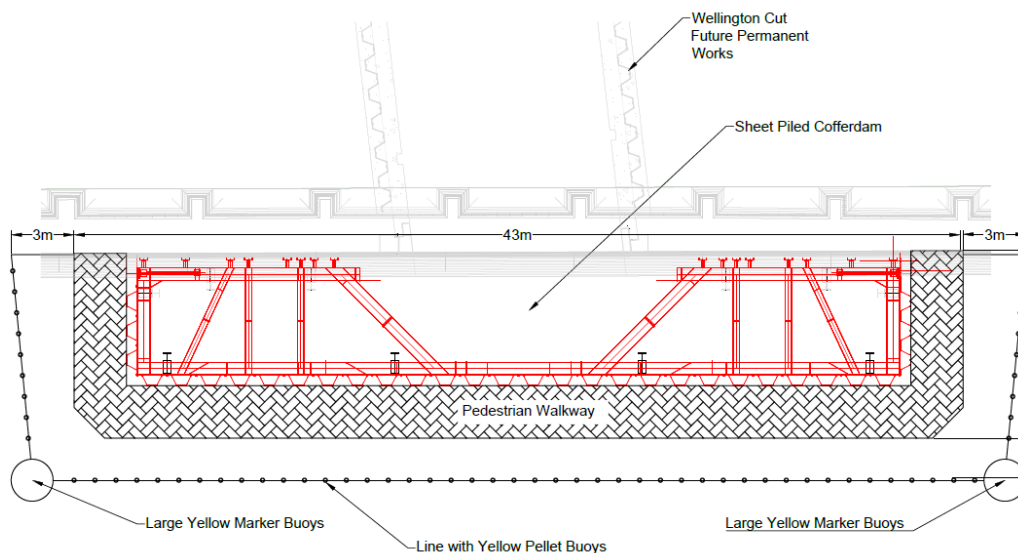
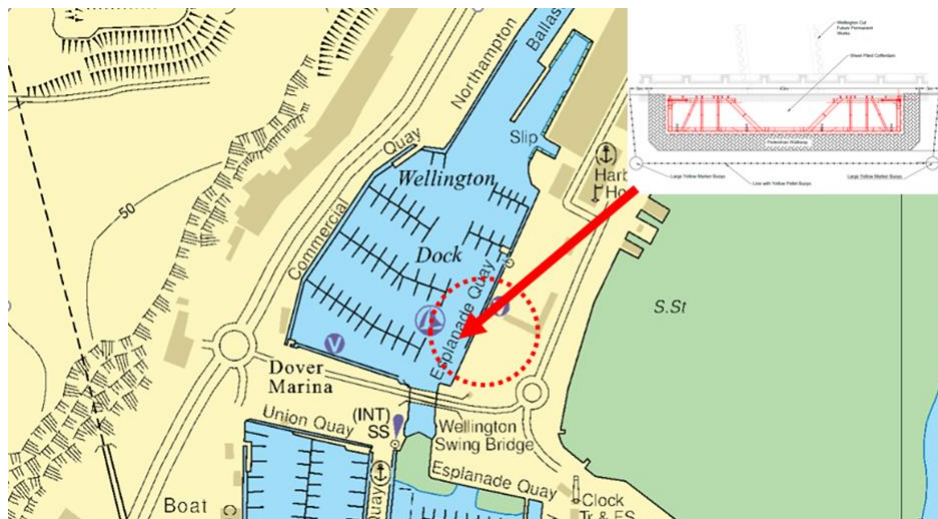


PORT OPERATIONS

Local Notice to Mariners 32/17

Wellington Dock Cofferdam and Walkway Marker Buoys

Mariners using the wellington docks are advised that two yellow bouys will be deployed on the 24th May 2017 until further notice. The bouys will be positioned 10m from the Esplanade Quay and approximately 45m apart. These bouys will mark a cofferdam and walkway extending East from Esplanade Quay and will be linked by a series of yellow float bouys. Mariners are instructed to keep well clear of the works at all times.



Notices Remaining In Force:

- 70/15 – Pier Alpha Nav Lt reinstated. HIL and Fog Signal Unserviceable (updated)
- 40/16 – Decommissioned Mooring Equipment
- 46/16 – Granville Dock Marina depths
- 17/17 – Installation of DWDR Exclusion Zone
- 18/17 – Dunkirk Jetty Light
- 20/17 - Demolition Works – Dunkirk Jetty
- 21/17 - Dredging & Scour Removal/Pile Cutting – Old Hoverport & Approaches
- 22/17 - West Buoy & Two Pellet Buoys Removed From Outer Harbour
- 25/17 – Piling Operations Berths "A" and "C"
- 27/17 - Diving Operations Old Seacat Berth Inner Harbour
- 28/17 - Bathymetric Survey Western Docks and Pier A in the Eastern Docks
- 31/17 - Dredging Operation in the Wick Channel and entrance to the Jet Foil Terminal
- 32/17 - Wellington Dock Cofferdam and Walkway Marker Buoys